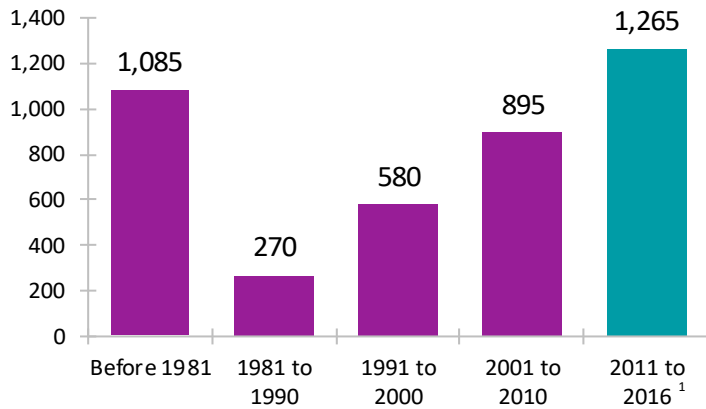


Immigrant Population in Bow Valley, 2016

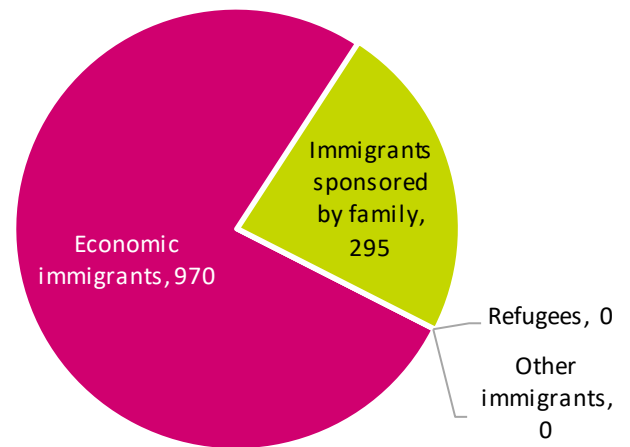
In 2016, there were 4,095 immigrants in Bow Valley, representing 19% of the population.

Period of Immigration



¹ This is a time period of only five years.

Admission Category of Recent Immigrants*

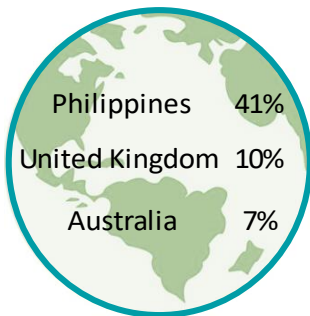


Number of Non-Permanent Residents

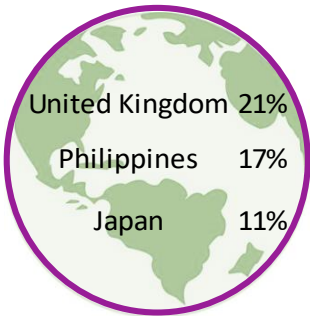
855

Top Countries of Birth

Recent Immigrants*



All Immigrants



Unable to Speak English or French

Recent Immigrants*

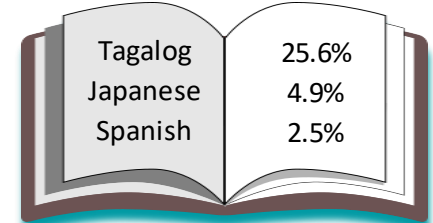
1%

All Immigrants

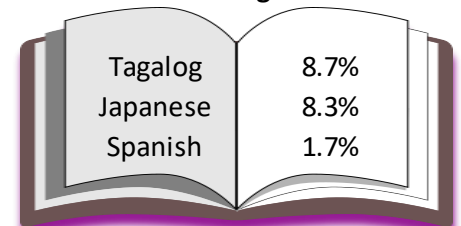
1%

Top Home Languages (Not English or French)

Recent Immigrants*



All Immigrants



Highest Level of Education

No Certificate



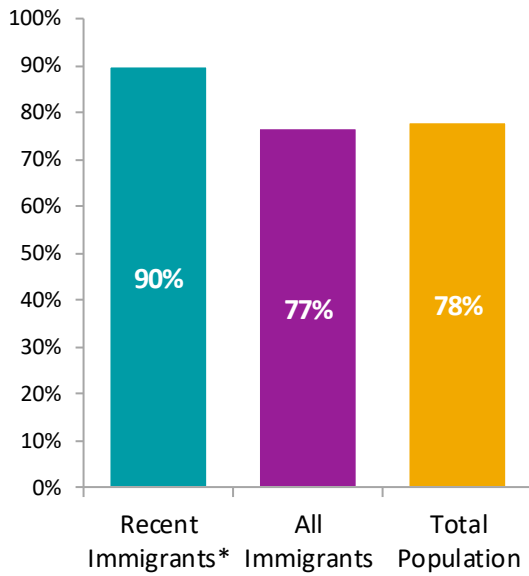
Completed Post Secondary

* Recent immigrants arrived in Canada in the five-year period between 2011 and 2016.

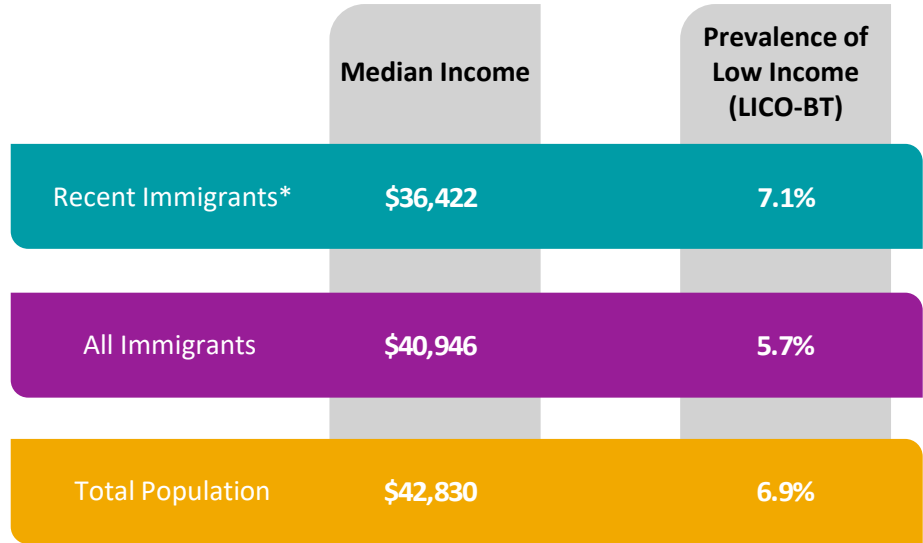
Data is for a semi-custom geography created for use in this project that includes the Alberta towns of Banff and Canmore (includes Dead Man's Flats); the designated places of Exshaw, Harvie Heights, Lac des Arcs, and Pigeon Mountain; and the improvement districts of Banff (includes Lake Louise) and Kananaskis.

Immigrant Population in Bow Valley, 2016

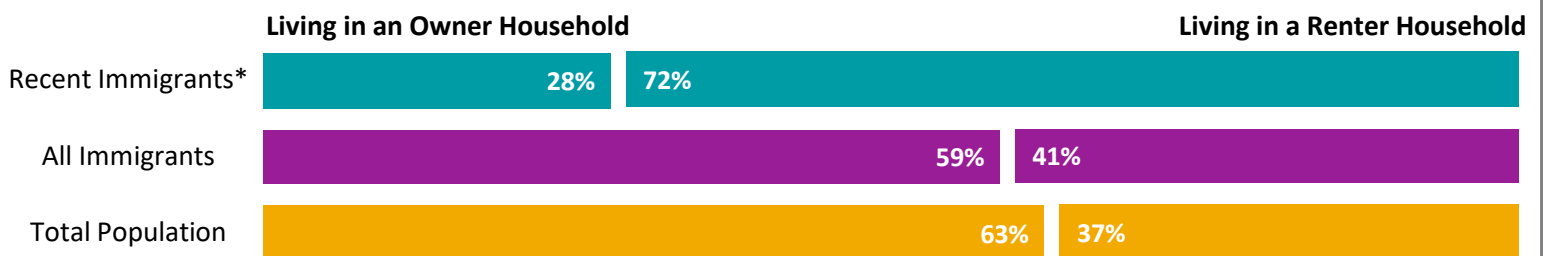
Labour Force Participation



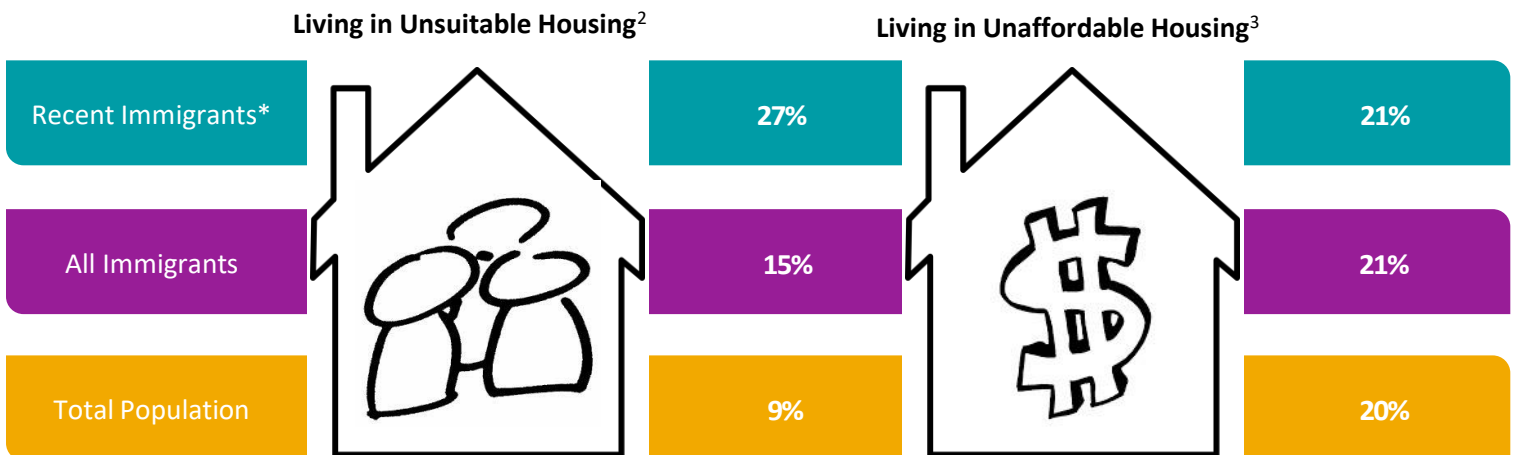
Income



Tenure



Housing Indicators



² Refers to dwellings that do not have enough bedrooms for the size and composition of the household. Also known as 'crowding'.

³ Refers to households that spend 30 per cent or more of their total income on shelter costs.

* Recent immigrants arrived in Canada in the five-year period between 2011 and 2016.

Data is for a semi-custom geography created for use in this project that includes the Alberta towns of Banff and Canmore (includes Dead Man's Flats); the designated places of Exshaw, Harvie Heights, Lac des Arcs, and Pigeon Mountain; and the improvement districts of Banff (includes Lake Louise) and Kananaskis.