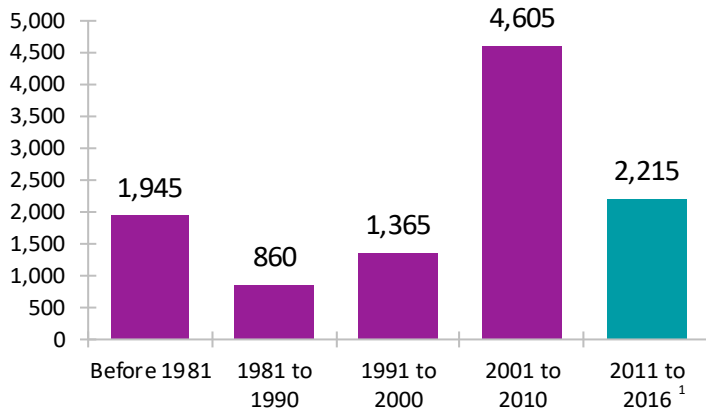


Immigrant Population in Pembina Valley, 2016

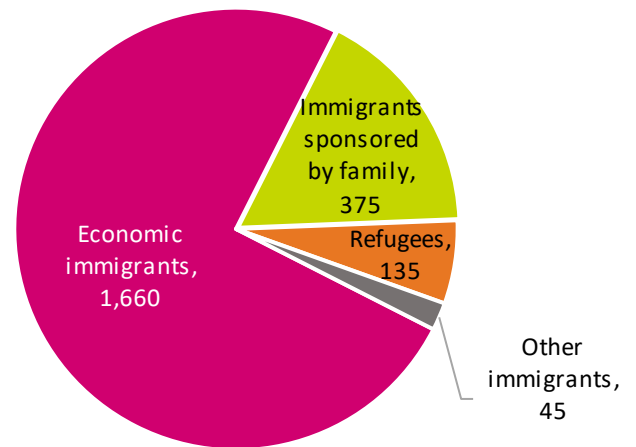
In 2016, there were 10,995 immigrants in Pembina Valley, representing 21% of the population.

Period of Immigration



¹ This is a time period of only five years.

Admission Category of Recent Immigrants*

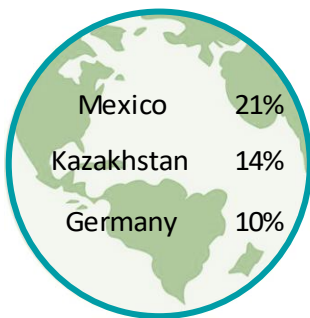


Number of Non-Permanent Residents

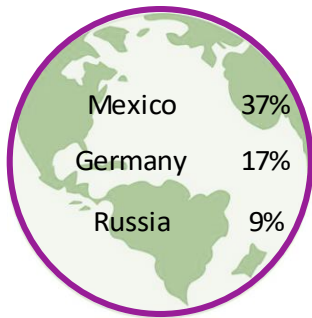
545

Top Countries of Birth

Recent Immigrants*



All Immigrants



Unable to Speak English or French

Recent Immigrants*

16%

All Immigrants

7%

Top Home Languages (Not English or French)

Recent Immigrants*



All Immigrants



Highest Level of Education

No Certificate

28%

Non-Permanent Residents

47%

Completed Post Secondary

35%

Recent Immigrants*

51%

49%

All Immigrants

30%

35%

Total Population

36%

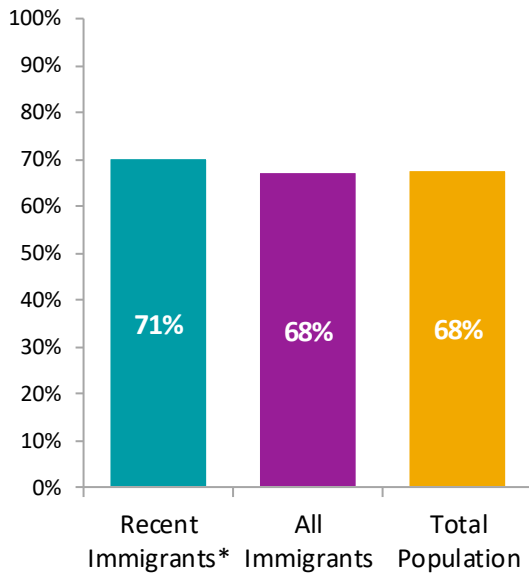
* Recent immigrants arrived in Canada in the five-year period between 2011 and 2016.

Data is for a semi-custom geography created for use in this project that includes the cities of Morden and Winkler; the towns of Altona and Carman; the municipalities of Emerson-Franklin and Rhineland; and the rural municipalities of Dufferin, Montcalm, Roland, Stanley, and Thompson.

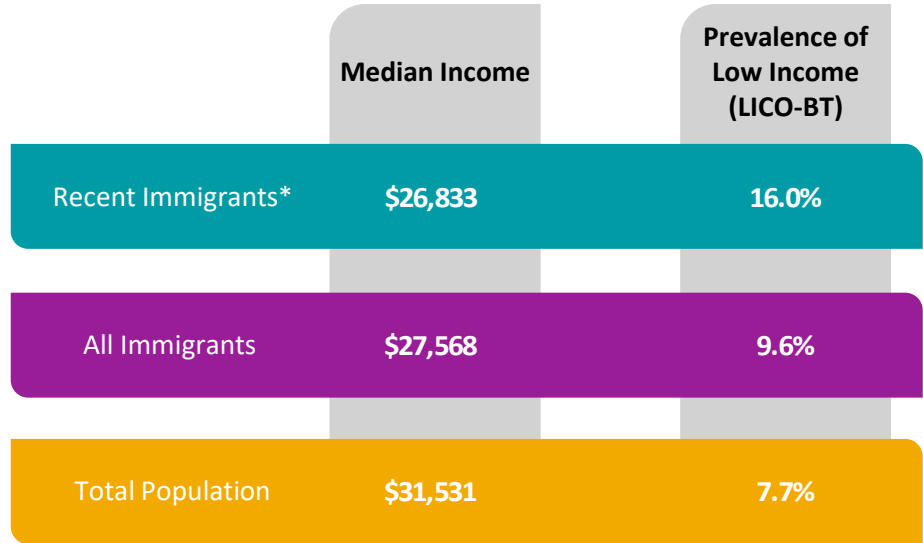
Created January 2019. Source: Statistics Canada, 2016 Census of Population.

Immigrant Population in Pembina Valley, 2016

Labour Force Participation



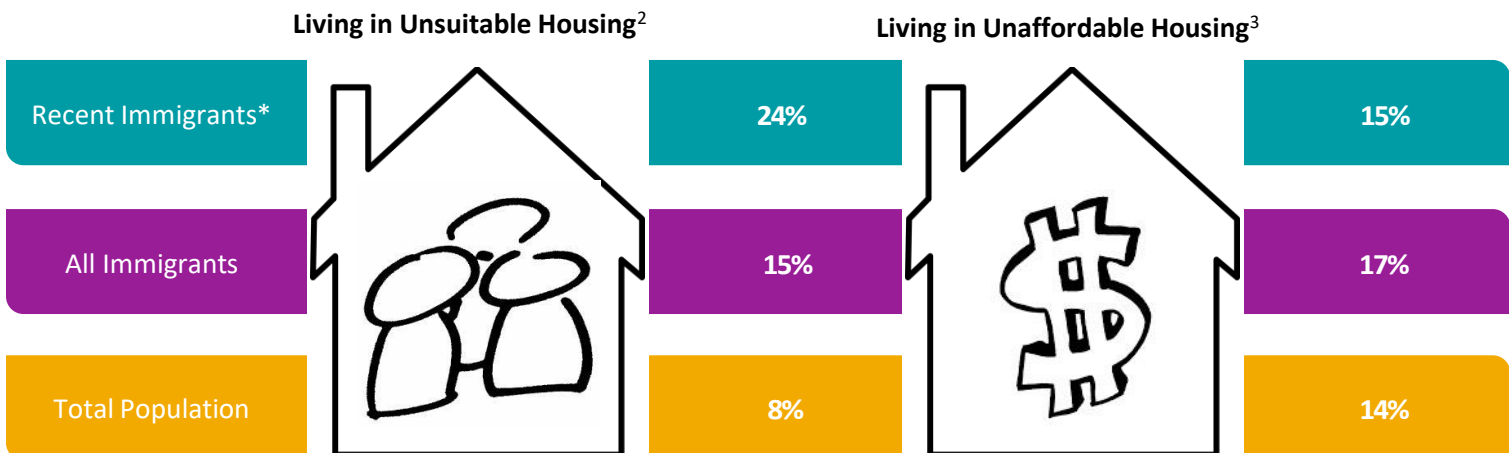
Income



Tenure



Housing Indicators



² Refers to dwellings that do not have enough bedrooms for the size and composition of the household. Also known as 'crowding'.

³ Refers to households that spend 30 per cent or more of their total income on shelter costs.

* Recent immigrants arrived in Canada in the five-year period between 2011 and 2016.

Data is for a semi-custom geography created for use in this project that includes the cities of Morden and Winkler; the towns of Altona and Carman; the municipalities of Emerson-Franklin and Rhineland; and the rural municipalities of Dufferin, Montcalm, Roland, Stanley, and Thompson.

Created January 2019. Source: Statistics Canada, 2016 Census of Population.