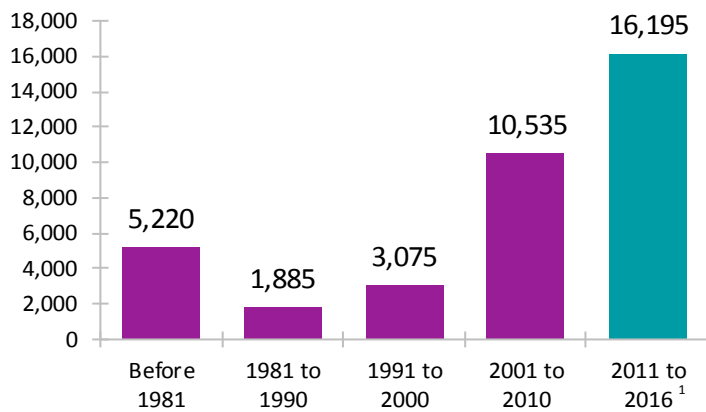


# Immigrant Population in Regina, 2016

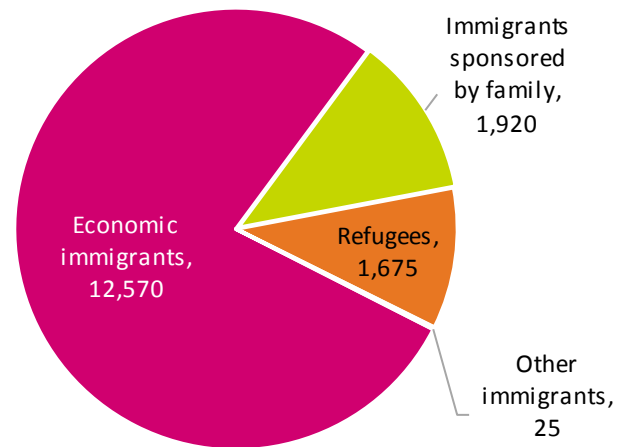
In 2016, there were 36,905 immigrants in Regina, representing 16% of the population.

## Period of Immigration



<sup>1</sup> This is a time period of only five years.

## Admission Category of Recent Immigrants\*

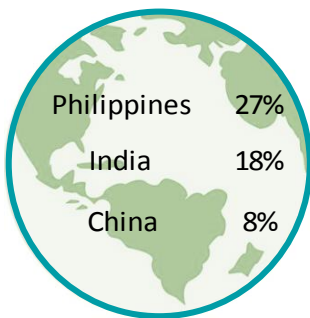


## Number of Non-Permanent Residents

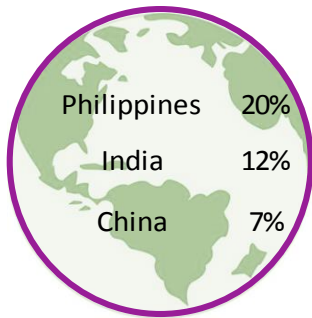
4,360

## Top Countries of Birth

### Recent Immigrants\*



### All Immigrants



## Unable to Speak English or French

### Recent Immigrants\*

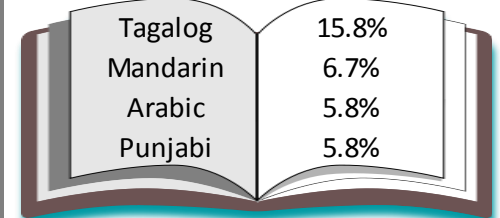
8%

### All Immigrants

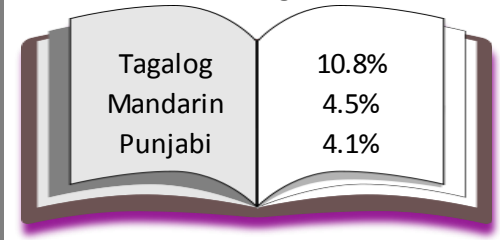
5%

## Top Home Languages (Not English or French)

### Recent Immigrants\*



### All Immigrants



## Highest Level of Education

### No Certificate

5%

Non-Permanent Residents

65%

### Completed Post Secondary

14%

Recent Immigrants\*

65%

15%

All Immigrants

62%

15%

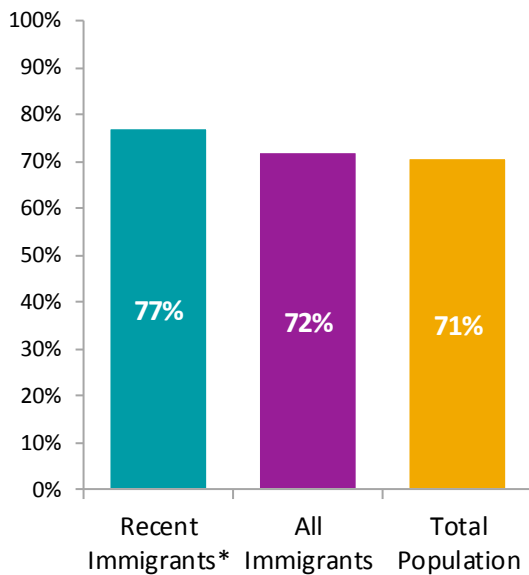
Total Population

53%

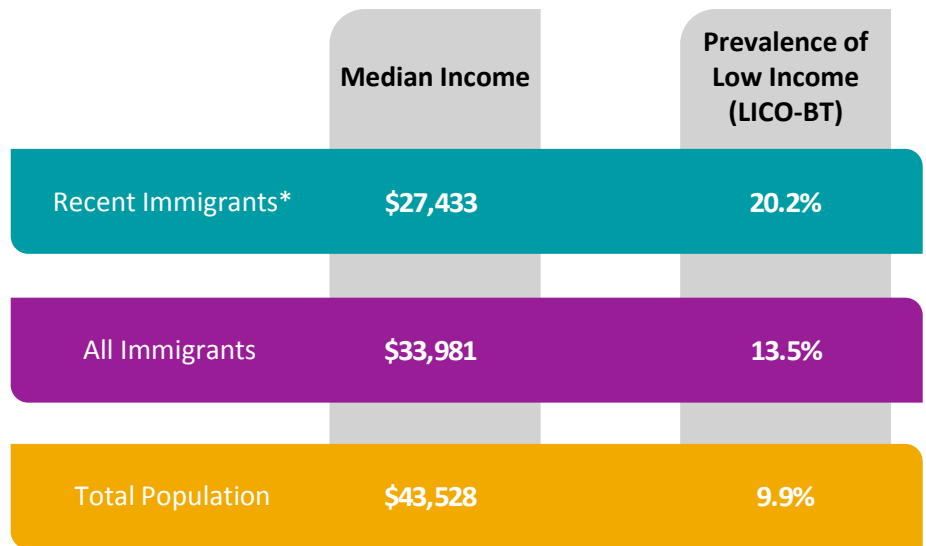
\* Recent immigrants arrived in Canada in the five-year period between 2011 and 2016. Data is for the geographic area of the Regina Census Metropolitan Area.

# Immigrant Population in Regina, 2016

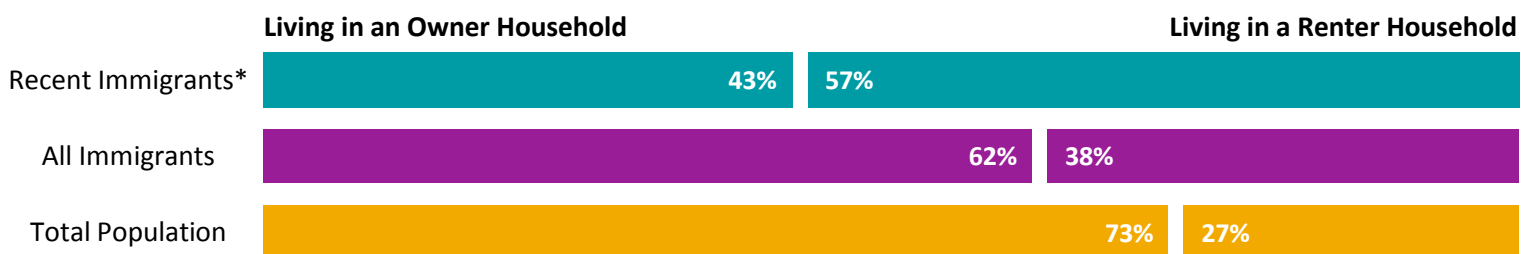
## Labour Force Participation



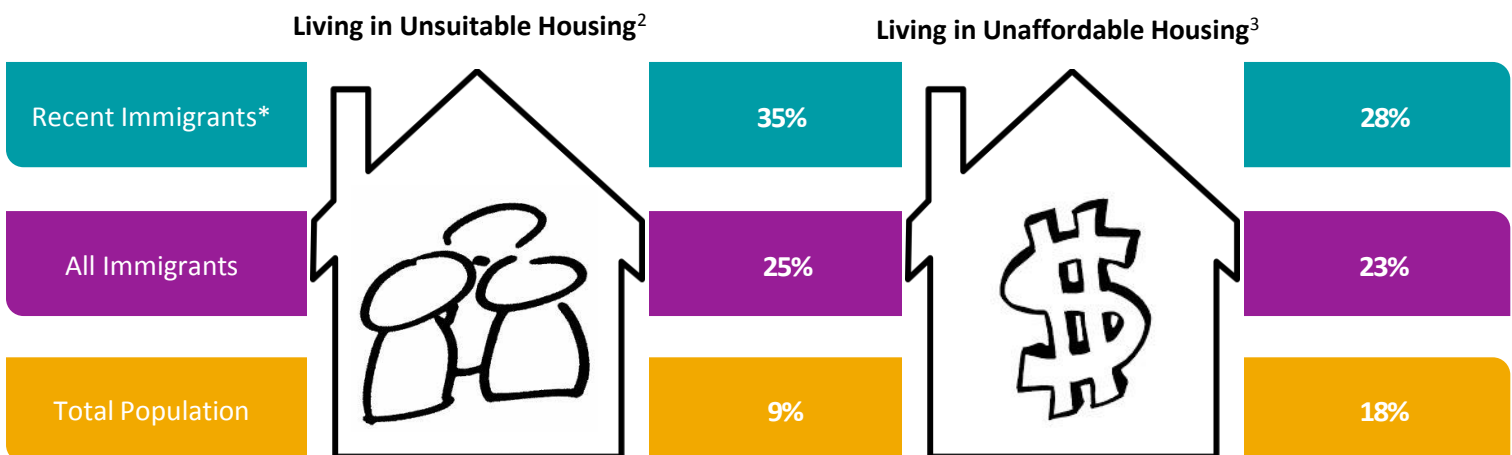
## Income



## Tenure



## Housing Indicators



<sup>2</sup> Refers to dwellings that do not have enough bedrooms for the size and composition of the household. Also known as 'crowding'.

<sup>3</sup> Refers to households that spend 30 per cent or more of their total income on shelter costs.

\* Recent immigrants arrived in Canada in the five-year period between 2011 and 2016. Data is for the geographic area of the Regina Census Metropolitan Area.