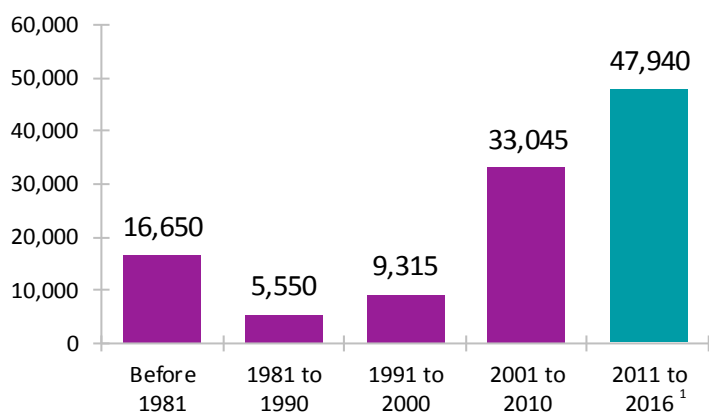


Immigrant Population in Saskatchewan, 2016

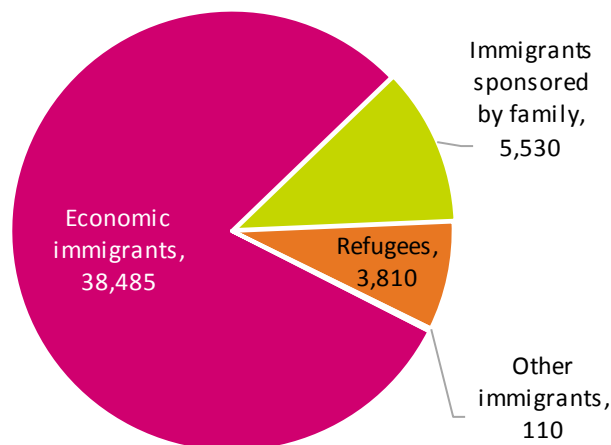
In 2016, there were 112,490 immigrants in Saskatchewan, representing 11% of the population.

Period of Immigration



¹ This is a time period of only five years.

Admission Category of Recent Immigrants*



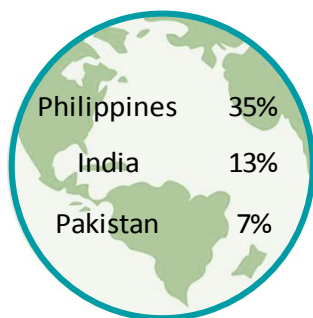
Number of Non-Permanent Residents

12,255

Top Countries of Birth

Recent Immigrants*

All Immigrants



Unable to Speak English or French

Recent Immigrants*

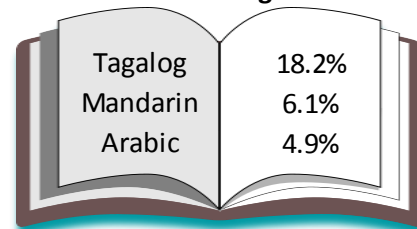
7%

All Immigrants

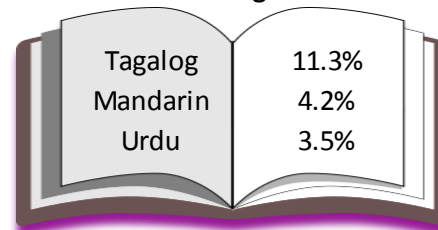
5%

Top Home Languages (Not English or French)

Recent Immigrants*



All Immigrants



Highest Level of Education

No Certificate

7%

Non-Permanent Residents

65%

14%

Recent Immigrants*

65%

15%

All Immigrants

61%

21%

Total Population

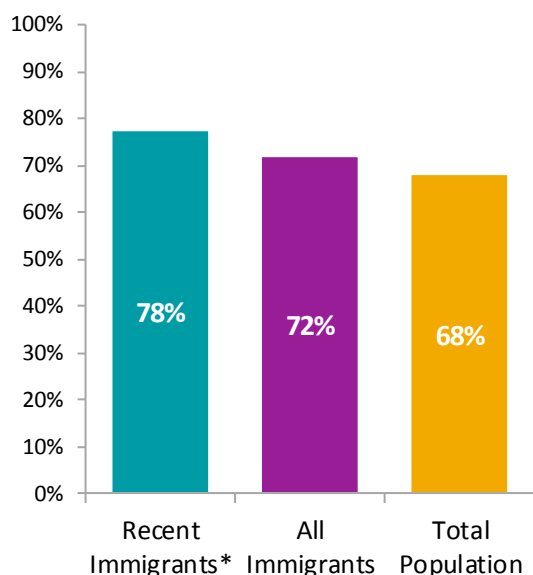
49%

Completed Post Secondary

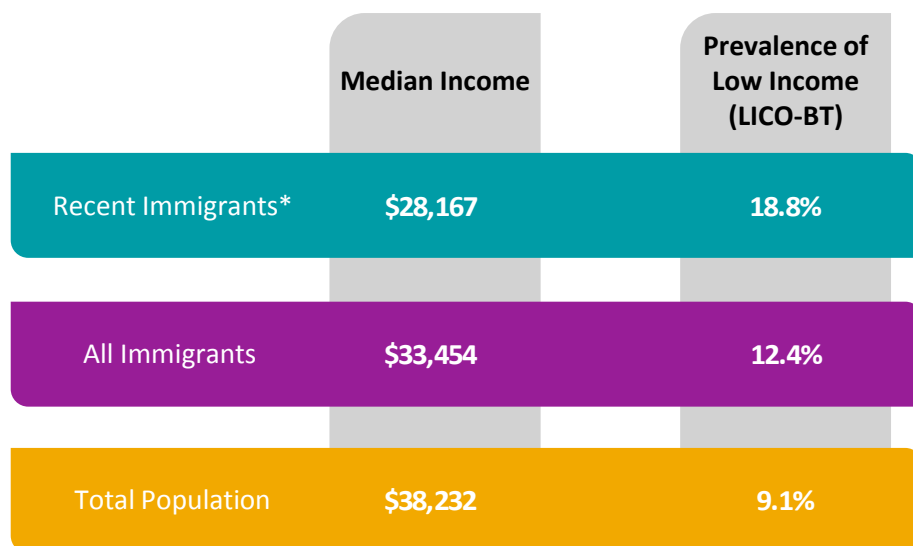
* Recent immigrants arrived in Canada in the five-year period between 2011 and 2016. Data is for the geographic area of Saskatchewan.

Immigrant Population in Saskatchewan, 2016

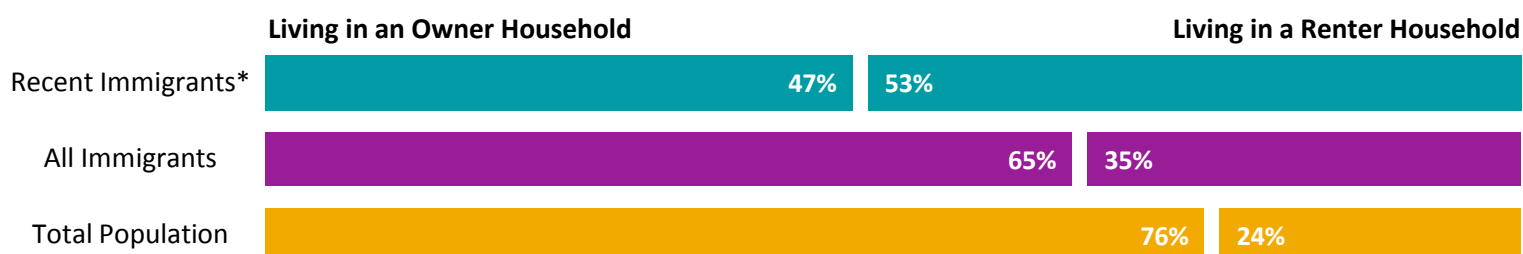
Labour Force Participation



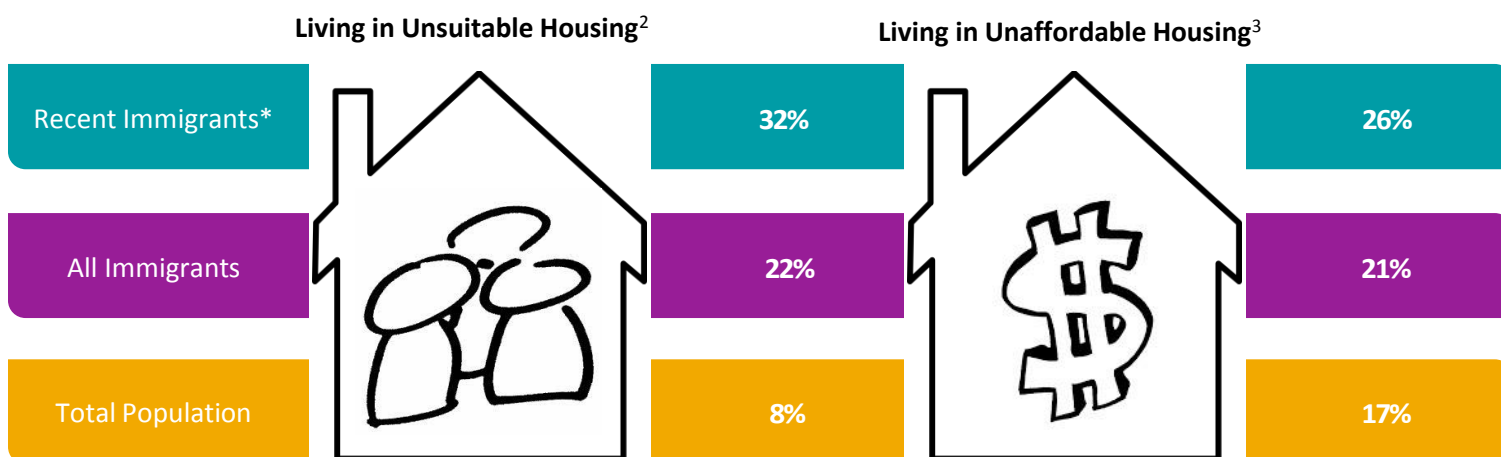
Income



Tenure



Housing Indicators



² Refers to dwellings that do not have enough bedrooms for the size and composition of the household. Also known as 'crowding'.

³ Refers to households that spend 30 per cent or more of their total income on shelter costs.