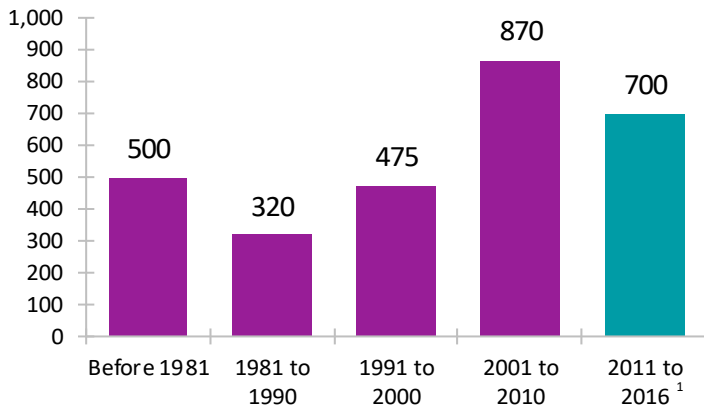


# Immigrant Population in Yellowknife, 2016

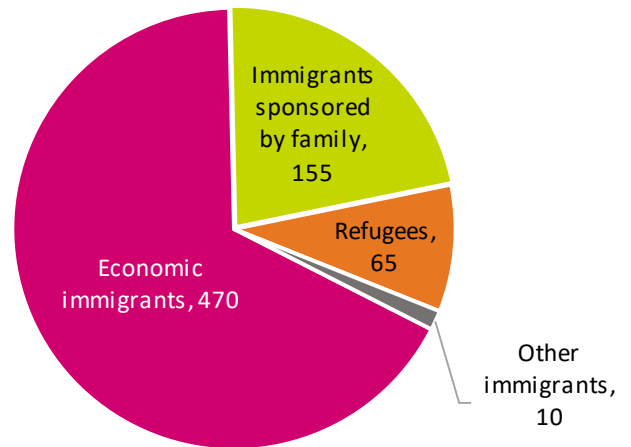
In 2016, there were 2,870 immigrants in Yellowknife, representing 15% of the population.

## Period of Immigration



<sup>1</sup> This is a time period of only five years.

## Admission Category of Recent Immigrants\*

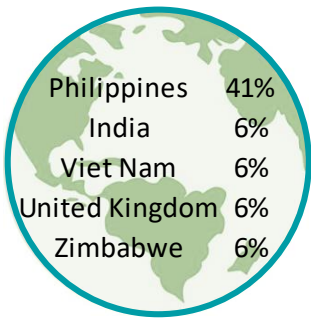


## Number of Non-Permanent Residents

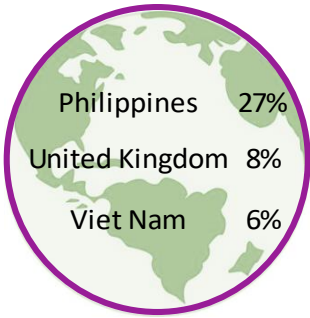
250

## Top Countries of Birth

### Recent Immigrants\*



### All Immigrants



## Unable to Speak English or French

### Recent Immigrants\*

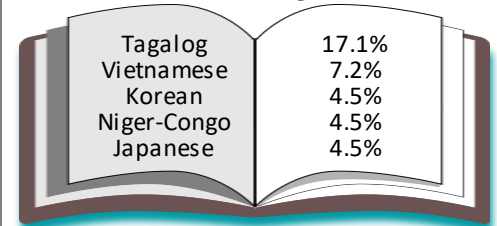
9%

### All Immigrants

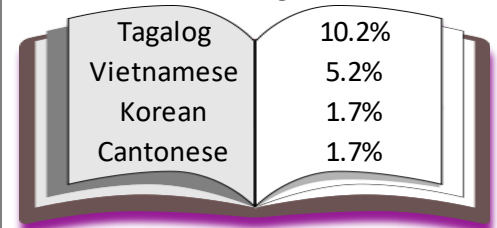
3%

## Top Home Languages (Not English or French)

### Recent Immigrants\*



### All Immigrants



## Highest Level of Education

### No Certificate

4% Non-Permanent Residents

12%

11%

15%

83%

Recent Immigrants\*

All Immigrants

Total Population

64%

66%

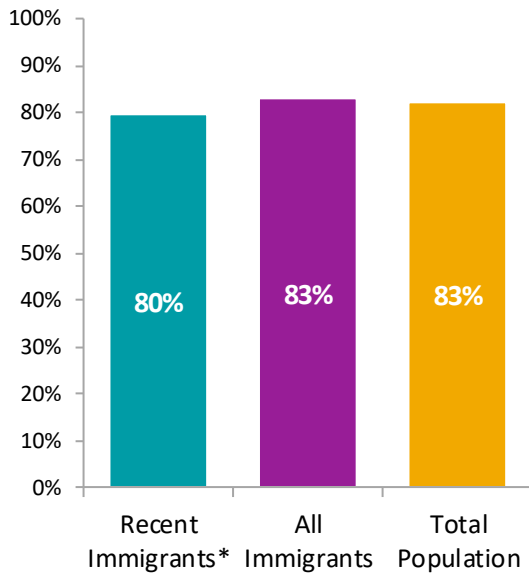
61%

### Completed Post Secondary

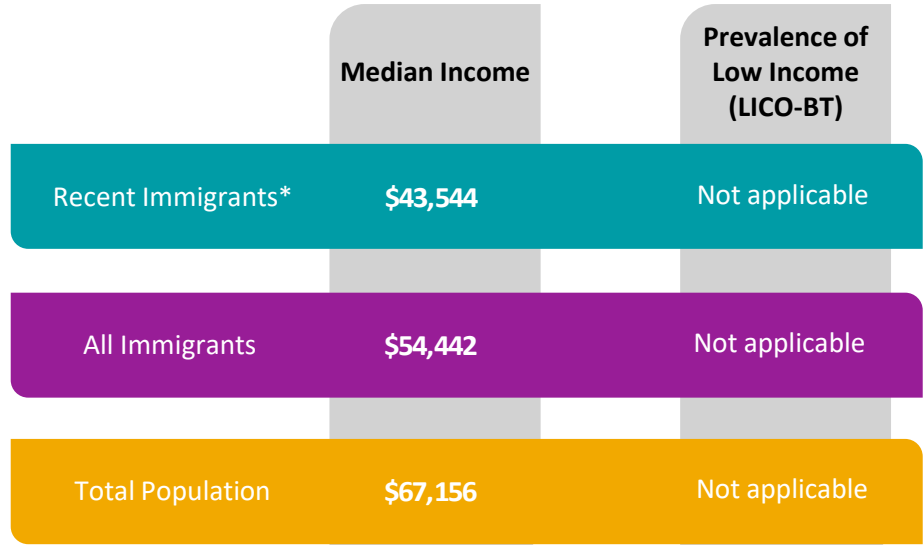
\* Recent immigrants arrived in Canada in the five-year period between 2011 and 2016. Data is for the geographic area of the Yellowknife census agglomeration.

# Immigrant Population in Yellowknife, 2016

## Labour Force Participation



## Income

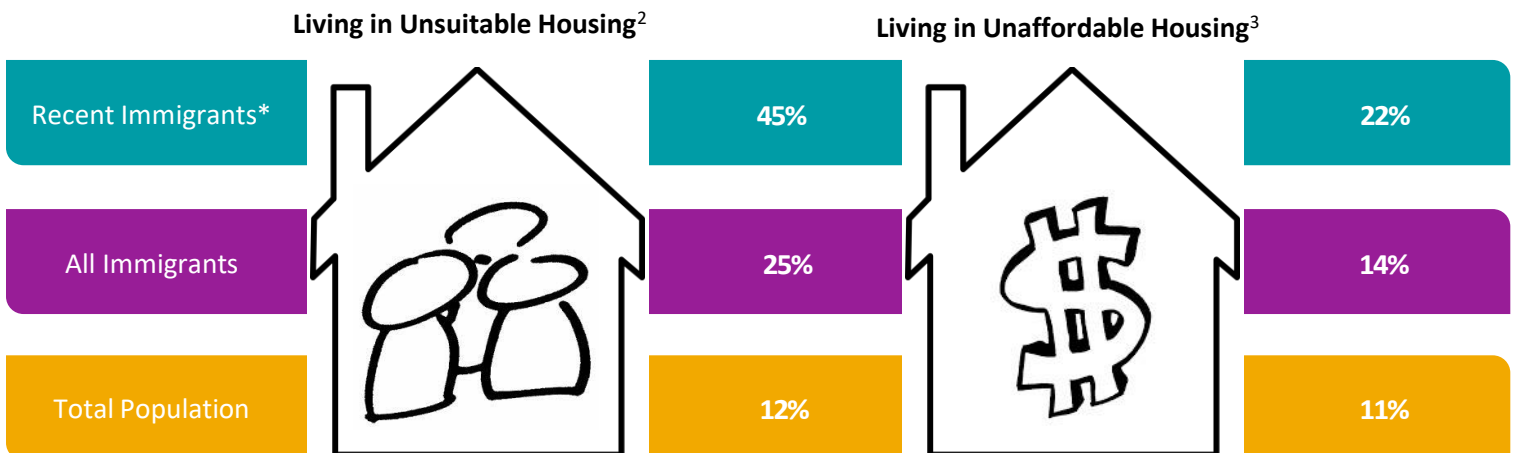


Low income figures are not calculated for the population living in the territories.

## Tenure



## Housing Indicators



<sup>2</sup> Refers to dwellings that do not have enough bedrooms for the size and composition of the household. Also known as 'crowding'.

<sup>3</sup> Refers to households that spend 30 per cent or more of their total income on shelter costs.

\* Recent immigrants arrived in Canada in the five-year period between 2011 and 2016. Data is for the geographic area of the Yellowknife census agglomeration.